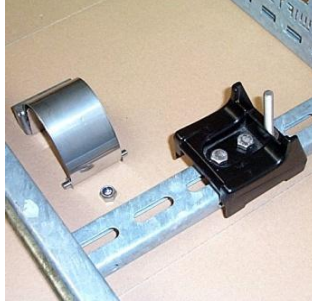


Installation Instructions Vari-Cleat

Example 1 Vari-Cleat No Liner Polyester-Black

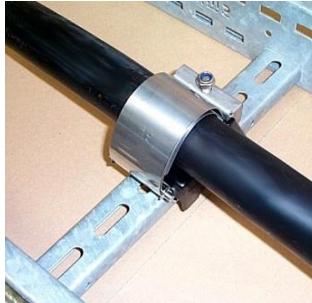
- 1) Remove the fastening nut and release the cleat's stainless steel strap. Secure the cleat to the support structure. (Bolts, nuts and washers supplied on request).



- 2) Install the cable.



- 3) To fit the stainless steel strap, engage the setscrew into the hole on the strap assembly and secure with the fastening nut.

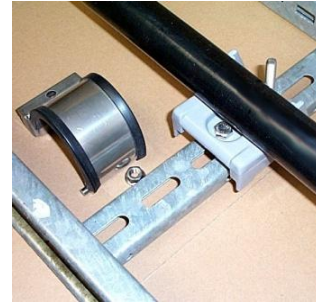
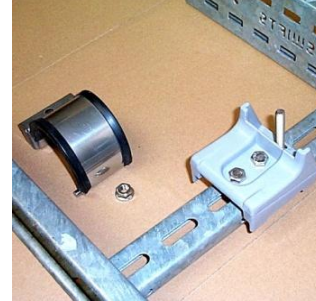


- 4) Locate the hinge pin into the base of the cleat and tighten the fastening nut.



Important: Do not over tighten the cleat. The cleat should secure the cable but does not need to be so tight that the cable bulges at either side of the cleat.

Example 2 Vari-Cleat with Liner Kelvar & Flanged Nut



Please note: Thread galling is a known phenomenon which can occur when using stainless steel fasteners. A breakdown in the material's protective oxide layer results in the set screw and nut becoming welded together. To reduce the incidence of thread galling excessive pressure and speed should be avoided during installation. Thread lubricants can also be used at the point of application if problems are experienced - please contact Ellis Patents for further information.